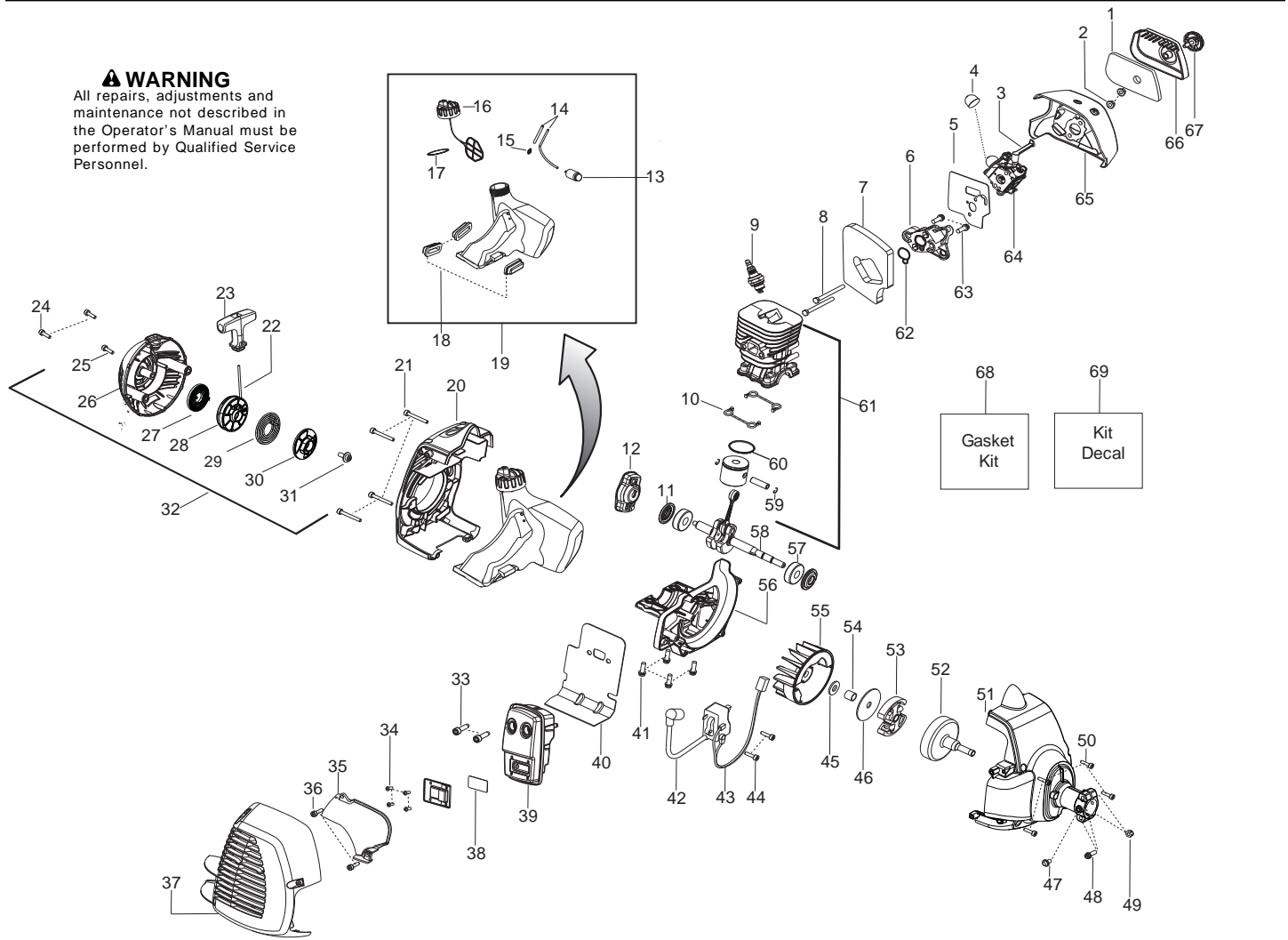




<b>Parts List No.</b> 545192187		<b>Husqvarna</b> ® PARTS LIST	<b>MODEL</b> 128LD (US/CAN)
<b>Date</b> 5/14/12	<b>Replaces</b> 545192187 - 8/24/10		<b>NOTE</b> : Illustration may differ from actual model due to design changes.

**⚠ WARNING**  
All repairs, adjustments and maintenance not described in the Operator's Manual must be performed by Qualified Service Personnel.



Ref.	Part No.	Description	Ref.	Part No.	Description	Ref.	Part No.	Description
1.	530150253	Filter	26.	525455501	Hsg. - Starter	47.	★★★★★	Screw
2.	530016101	Nut - Carb. Screw	27.	545008087	Kit - Spring	48.	★★★★★	Screw
3.	530057844	Lever - Choke	28.	579066801	Kit - Starter Pulley	49.	530015768	Nut
4.	530058709	Bulb - Purge	29.	578465101	Spring - Driver	50.	530016456	Screw
5.	545008086	Kit - Carb. Gasket (Incl. 7,62)	30.	579366201	Pulley - Driver	51.	★★★★★	Assy - Fan Housing
6.	530035596	Adaptor - Carb.	31.	530016468	Screw	52.	★★★★★	Assy - Clutch Drum
7.	----	Foam - Gasket (Ref.#5,68)	32.	579063101	Assy - Starter Hsg. (Incl. 22,23,25 - 31)	53.	530055122	Assy - Clutch
8.	530016400	Bolt	33.	530058982	Bolt - Muffler	54.	530057852	Spacer
9.	952030201	Plug - Spark (RCJ-8Y)	34.	530015241	Screw	55.	530039242	Flywheel
10.	----	Seal - Cylinder (Ref.#68)	35.	530150440	Shield - Heat	56.	545195601	Crankcase - Cast
11.	----	Seal - Crankshaft (Ref.#68)	36.	530016449	Screw	57.	545013401	Bearing
12.	503873305	Assy - Starter Pawl	37.	576215001	Kit - Muffler Guard (Incl. Screws)	58.	545195202	Assy - Crankshaft
13.	530095646	Assy - Fuel Filter	38.	545030501	Kit - Spark (Incl. 34)	59.	530015162	Retainer - Piston Pin
14.	★★★★★	Kit - Fuel Line (Incl. 15)	39.	574031502	Kit - Muffler	60.	530019283	Ring - Piston
15.	530023877	Fitting - Fuel line	40.	----	Gasket (Ref.#39,68)	61.	545008082	Kit - Piston/Cyl.(Incl. 59,60)
16.	★★★★★	Assy - Cap w/ret.(Incl. 17)	41.	530015897	Screw	62.	----	Seal (Ref.#5,68)
17.	----	O-ring (Ref.#16,19,68)	42.	545046701	Module	63.	530015897	Screw
18.	530059780	Isolator - Fuel Tank	43.	530039227	Assy - Leadwire	64.	545081848	Kit - Carb. (Incl. 3,4,5)
19.	★★★★★	Kit - Fuel Tank Assy. (Incl. 14,15,16,17)	44.	530016456	Screw	65.	576459001	Airbox
20.	576153201	Shroud - Rear	45.	530016463	Washer	66.	530057846	Cover - Air Box
21.	530016448	Screw	46.	530094189	Washer - Clutch	67.	530059796	Assy - Knob
22.	545008079	Kit - Rope				68.	545008084	Kit - Gasket (Incl. 5,7,10,11,17,40,62)
23.	545043204	Handle - Starter				69.	545180886	Kit - Decal
24.	530016426	Screw						
25.	530016449	Screw						

✓ = New Part Number For This IPL

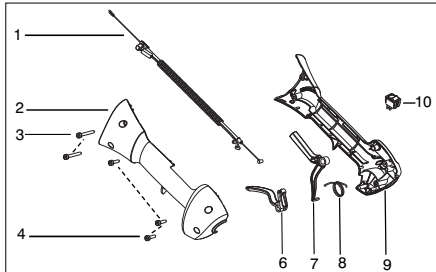
★ = Refer to the Service Reference Indicated for more information.(Located at the END of the IPL)

<b>Parts List No.</b> 545192187		<b>Husqvarna</b> ® PARTS LIST	<b>MODEL</b> 128LD (US/CAN)
<b>Date</b> 5/14/12	<b>Replaces</b> 545192187 - 8/24/10		<b>NOTE</b> : Illustration may differ from actual model due to design changes.

\*\*\*\*\* **Service Reference** \*\*\*\*\*

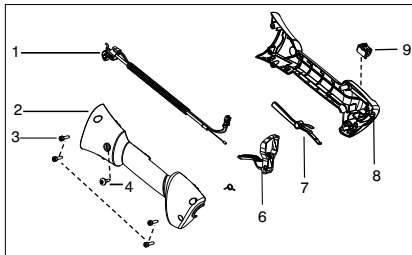
Note : Due to product improvements, your unit may have a different throttle housing assembly.  
Please refer to the serial number on your unit and order the parts below.

Serial Number - 2010-72N and lower, please use the following parts:



- Ref.# 1 - 545125301 - Assy-Cable/Wire Harness
- Ref.# 2 - 545062001 - Housing-throttle (RH)
- Ref.# 3 - 530016448 - Screw
- Ref.# 4 - 530016449 - Screw
- Ref.# 6 - 545066001 - Trigger
- Ref.# 7 - 530059804 - Lockout - Throttle
- Ref.# 8 - 545045601 - Spring - Lockout
- Ref.# 9 - 545067001 - Housing-throttle (LH)
- Ref.#10- 545030601 - Kit - Switch

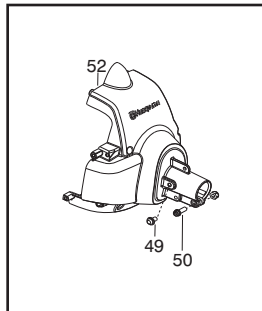
Serial Number - 2010-73N and higher, please use the following parts:



- Ref.# 1 - 576139401 - Assy. - Cable/Wire Harness
- Ref.# 2 - 545223001 - Housing-throttle (RH)
- Ref.# 3 - 530016449 - Screw
- Ref.# 4 - 530015805 - Screw
- Ref.# 6 - 574355301 - Trigger
- Ref.# 7 - 574355401 - Lockout - Throttle
- Ref.# 8 - 545223201 - Housing-throttle (LH)
- Ref.# 9 - 545049309 - Switch

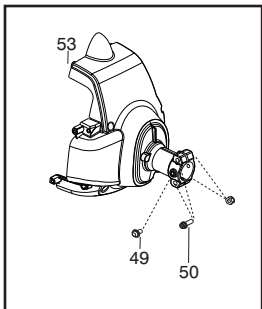
\*\*\*\*\* **Service Reference** \*\*\*\*\*

Note : Due to product improvements, your unit may have a different fan housing assembly.  
Please refer to the serial number on your unit and order the parts below.



Serial Number - 2010-72N and lower, please use the following parts:

- Ref.# 49 - 530016469 - Screw
- Ref.# 50 - 530016470 - Screw
- Ref.# 52 - 545017501 - Assy. - Fan Housing



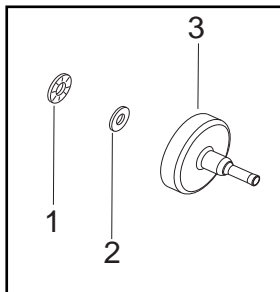
Serial Number - 2010-73N and higher, please use the following parts:

- Ref.# 49 - 530015805 - Screw
- Ref.# 50 - 530015774 - Screw
- Ref.# 53 - 545205201 - Assy. - Fan Housing

<b>Parts List No.</b> 545192187		 <b>Husqvarna</b> ® PARTS LIST	<b>MODEL</b> 128LD (US/CAN)
<b>Date</b> 5/14/12	<b>Replaces</b> 545192187 - 8/24/10		<b>NOTE</b> : Illustration may differ from actual model due to design changes.

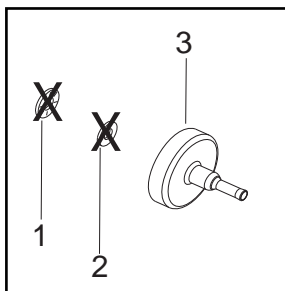
\*\*\*\*\* **Service Reference** \*\*\*\*\*

Note : Due to product improvements, your unit may have a different clutch drum assembly.  
Please refer to the serial number on your unit and order the parts below.



Serial Number - 2012-090N and lower, please use the following parts:

- Ref.# 1 - 545173401 - Thrust Bearing
- Ref.# 2 - 530016420 - Thrust Washer
- Ref.# 3 - 530150039 - Assy. - Clutch Drum



Serial Number - 2012-091N and higher, please use the following parts:

- Ref.# 1 - Thrust Bearing is NOT REQUIRED
- Ref.# 2 - Thrust Washer is NOT REQUIRED
- Ref.# 3 - 580446601 - Kit - Clutch Drum

\*\*\*\*\* **Service Reference** \*\*\*\*\*

Note : Due to product improvements, your unit may have a different gas tank assembly and fuel cap.  
Please refer to the serial number on your unit and order the parts below.

Serial Number - 2009-001N thru 2012-090N, please use the following parts:

- Page 2, Ref.# 14 - 530069599 Kit - Fuel Line
- Page 2, Ref.# 16 - 530150350 Cap - Fuel
- Page 2, Ref.# 19 - 545180870 Kit - Fuel Tank Assembly

Serial Number - 2012-091N and higher, please use the following parts:

- Page 2, Ref.# 14 - ----- (REF. # 19)
- Page 2, Ref.# 16 - 578931501 Cap - Fuel
- Page 2, Ref.# 19 - 578942901 Assembly - Fuel Tank